

Table of Contents

1. Introduction	1
2. Ethical Guidelines for Health Care in Sports Medicine	3
3. Beijing 2008 Health Care Programme Operations	7
3.1 Beijing 2008 Health Care Programme Command Centre	7
3.2 Health Care Services Organizational Chart	8
4. Accreditation	9
4.1 IPC Medical & Scientific Department.....	9
4.2 National Paralympic Committee (NPC) Health Care Professionals	9
5. NPC Health Care Services Issues	10
5.1 Registration of NPC Team Doctors.....	10
5.2 Insurance	12
5.3 Pharmacy Services and Prescription Privileges	13
6. Health Care Services at the Paralympic Village ..	14
6.1 NPC Medical Spaces.....	14
6.2 Paralympic Village Polyclinic	14
6.3 Paralympic Village International Zone	16
6.4 Medical Arrangements for Venues in Paralympic Co-host Cities.....	17
7. Health Care Services at Paralympic Competition Venues	18
7.1 Health Care for Athletes and Games Officials	18
7.2 Health Care for the Paralympic Family	18
7.3 Health Care for Spectators and Others	19
8. Health Care Services at Paralympic Training Venues	20
9. Health Care Services at Paralympic Non-competition Venues	21
9.1 Opening and Closing Ceremonies.....	21
9.2 Beijing Capital International Airport, QingdaoLiuting International Airport, Hong Kong International Airport.....	21

9.3	Beijing Olympic Green Common Domain.....	22
9.4	Main Press Centre.....	22
9.5	International Broadcasting Centre.....	22
9.6	Paralympic Family Hotel.....	23
10.	Emergency Medical Services and Transportation.....	24
11.	Paralympic Family Health Care Programme.....	25
11.1	Paralympic Hospital Network.....	25
11.2	Medical Expenses Policy for Paralympic Family	27
11.3	Repatriation.....	29
12.	Public Health and Hygiene Issues	30
13.	Non Smoking Policy	31
14.	Autonomic Dysreflexia and Boosting	32
15.	Orthotic, Prosthetic and Wheelchair Repair Services	33
15.1	Repair Services at Beijing Paralympic Village.....	33
15.2	Repair Services at Paralympic Competition Venues	33
Appendix		
	Map of Dedicated Paralympic Hospitals in Beijing	

1. Introduction

Under the supervision of the International Paralympic Committee (IPC), and in accordance with the stipulations of the Paralympic Handbook, the Beijing Organizing Committee for the Games of the XXIX Olympiad (BOCOG) has developed a Health Care Programme for the Beijing 2008 Paralympic Games.

The Beijing 2008 Health Care Programme has prepared a comprehensive range of medical services to meet the health care needs of athletes, officials, members of the media and workforce. During the Games, more than 2,000 health care volunteers will deliver these services.

The range of services provided by the Beijing 2008 Health Care Programme includes:

- Medical facilities for athletes at competition and training venues in line with the Guidelines of the relevant International Sports Federations;
- Medical facilities for members of the Paralympic Family, spectators, staff, BOCOG volunteers and members of the media at competition venues;
- A Polyclinic and first aid station in the Beijing Paralympic Village, and medical facilities in other Villages;
- Medical facilities in the Main Press Centre, the International Broadcasting Centre and Swissôtel Beijing, as well as at other selected non-competition venues;

Beijing 2008

- A dedicated network of Paralympic Hospitals in Beijing, Qingdao and Hong Kong Special Administrative Region (Hong Kong SAR), including athlete hospitals, Paralympic Family hospitals, an accredited media hospital, a specialised Rehabilitation hospital; and a hospital network for spectators and others attending Paralympic Games venues;
- A dedicated medical transfer service from Paralympic venues to the dedicated Paralympic Hospitals;
- Access to a Health Care Interpreter Service;
- A comprehensive and integrated public health programme to perform public health inspections;
- An epidemiological surveillance system to respond to emergency public health issues.

Health care professionals travelling with their own teams will be granted access to all BOCOG medical facilities at Paralympic venues. A process will also be implemented to grant these professionals limited, temporary rights to practise on members of their own teams while in China *.

The Beijing 2008 Health Care team welcomes you to China. As part of our pledge to stage a high-level Paralympic Games with distinguishing features, we will provide you with optimum health care services.

*** For further information see section 5.1-Registration of NPC Team Doctors.**

2. Ethical Guidelines for Health Care in Sports Medicine

The IPC endorses the recommendations of the Medical Commission of the International Olympic Committee regarding the following ethical guidelines for physicians and allied health professionals (henceforth named physicians) who care for athletes and sports participants (henceforth named athletes). The Ethical Guidelines have been modified from those prepared by the World Medical Association (*World Medical Journal*, 28:33, 1981), include some principles contained in the 1997 Ethics statement of the “Fédération Internationale de Médecine du Sport” (FIMS) and recognise the special circumstances in which medical care and guidance are provided for participants of sports.

1. All physicians who care for athletes have an ethical obligation to understand the physical, mental and emotional demands placed upon athletes during training for and participating in their sport(s).
2. When the sports person is a professional athlete and derives a livelihood from sport, the physician should pay due regard to the occupational medical aspects involved.
3. A fundamental right of all patients including athletes is to seek a second opinion. Athletes whatever their status, must never be denied this right. It is recommended that this is undertaken with the knowledge of and referral from the treating physician.
4. It is the responsibility of all physicians who care for athletes to ensure that they recognise of the changes that

have occurred and continue to occur in the medical management of athletes. This is to ensure that they provide optimal care for their athlete patients.

5. An essential principle that must never be compromised is that advances in sports medicine and related disciplines must be published or disseminated and must never be withheld to benefit selected athletes.

6. When the sports participant is a child or adolescent, the physician must ensure that the training and competition are appropriate for the stage of growth and development. Sports training and/or participation that may jeopardise the normal physical or mental development of the child or adolescent should not be permitted.

7. In sports medicine, as in all other branches of medicine, professional confidentiality must be observed. The right to privacy relating to medical advice or treatment that the athlete has received must be protected.

8. When serving as a team or sports physician, it is acknowledged that he/she has a responsibility to both athletes and team administrators. Each athlete must be informed of the responsibility and requested to authorise disclosure of otherwise confidential medical information; but only to specified and responsible persons and solely for the purpose of determining fitness of that athlete to participate.

9. At sports venues, it is the responsibility of the team or contest physician to determine whether an injured athlete may continue in or return to the game. This decision should not be delegated to other professionals or personnel. In the physician's absence, these individuals must adhere strictly to the guidelines that

have been provided. At all times, the priority must be to safeguard the athlete's health and safety. The outcome of the competition must never influence such decisions.

10. Physicians should publicly oppose and in practice refrain from using any:

- Substance or any method that has been prohibited by the WADA, the IPC or the International Sports Federations concerned;
- Method that is not in accordance with professional ethics;
- Procedures that may be harmful to athletes; especially:
 - a. Doping, which is unethical and unprofessional. Physicians who advocate or who practice doping are ineligible to be accredited as a team or sports physician;
 - b. Procedures that mask pain or other protective symptoms, and which if used, enable the athlete to compete with an injury or illness; whereas in the absence of such procedures, participation would be inadvisable or impossible;
 - c. Permit training and/or competing when to do so is incompatible with the preservation of the individual's health, fitness or safety.

11. The physician should inform the athlete, those responsible for him or her and other relevant parties of the consequences of these procedures that he is opposing. The physician should guard against their use by others, enlist the support of other physicians and organizations with similar aims, protect the athlete from any pressures that may induce him or her to use these methods and assist with the supervision against these procedures.

12. Physicians who advocate or use any of the above mentioned unethical procedures are in breach of the Ethical Guidelines and are unsuited to be accredited as a team or sports physician.

13. To undertake these ethical obligations, the physician must insist on professional autonomy over all medical decisions concerning the health and the safety of the athlete, neither of which should be prejudiced to assist the interests of any third party.

14. When physicians accompany national teams to international competitions in other countries, they should be accorded the rights and privileges necessary to undertake their professional responsibilities to their athletes while abroad.

15. It is strongly recommended that a sports physician is involved in framing sports regulations.

16. Research in sports medicine should always be conducted using accepted ethical guidelines. Research must never be undertaken in a manner that may injure athletes or jeopardise their performance.

3. Beijing 2008 Health Care Programme Operations

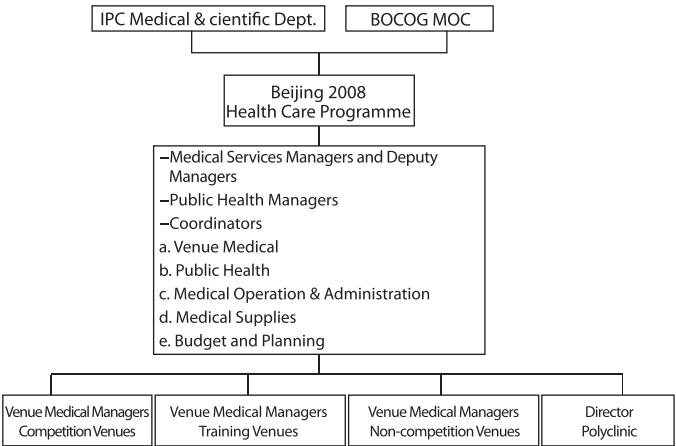
3.1 Beijing 2008 Health Care Programme Command Centre

The Beijing 2008 Health Care Programme:

- Administers the Beijing 2008 Health Care Programme;
- Provides advice regarding the Beijing 2008 Health Care Programme policies and procedures and responds to issues that arise at venues;
- Coordinates and deploys the staffing, logistics and resources of the Beijing 2008 Health Care Programme;
- Manages a central team and maintains a network of communications between venue and Polyclinic teams;
- Monitors venue and Paralympic Village medical issues and resolves issues that cannot be resolved at venue or Polyclinic level;
- Assists in supporting any disaster or emergency response;
- Oversees the centralised distribution of medical equipment, consumables and pharmaceuticals;
- Sets up a Data Entry Centre that:
 - a. Is located within the Health Care Services Command Centre;
 - b. Manages and processes completed medical encounter forms forwarded from all venues and the Polyclinic;
 - c. Provides access to Games wide surveillance data;

- d. Assesses and tracks medical incidents, illness trends, infectious disease, public health issues and acts on such information;
 - e. Generates medical encounter reports, both daily and cumulatively for the IPC Medical & Scientific Department;
 - f. Maintains the appropriate level of medical encounters' confidentiality.
- Liaises with the Paralympic Hospital Network;
 - Reports directly to IPC Medical & Scientific Department and BOCOG Main Operations Centre (MOC).

3.2 Health Care Services Organizational Chart



4. Accreditation

4.1 IPC Medical & Scientific Department

The IPC Medical & Scientific Department will be accredited in accordance with the *IPC Accreditation and Sport Entries at the Paralympic Games Users' Guide*.

4.2 National Paralympic Committee (NPC) Health Care Professionals

NPC health care professionals will be accredited in the Am category in accordance with the *IPC Accreditation and Sport Entries at the Paralympic Games Users' Guide*. NPC health care professionals may have access to the field of play and to athlete preparation areas. They will also have access to back of house administration and Organization areas if treatment facilities are located there.

Note: The accreditation badge is not intended to serve as a certification that the individual is registered as a health care professional.

5. NPC Health Care Services Issues

5.1 Registration of NPC Team Doctors

The Ministry of Health of the People's Republic of China will require all NPC team doctors to be registered. These registrations will be referred to in case the doctor practises medicine during the Games time. The authorised NPC team doctors can provide their usual range of services to members of their own team or to members of other teams where there is a prior agreement following the completion of the BOCOG team doctor registration process. Copy of the agreement should be provided to BOCOG as affiliated document. Completing this process will ensure that team doctors may:

- Treat members of their own team or members of other team according to a prior formal agreement;
- Prescribe medications, using a special Polyclinic prescription form, dispensed from the Polyclinic Pharmacy in Beijing Paralympic Village or the clinics in Hong Kong and Qingdao Villages, if current professional licence allows;
- Use pharmaceuticals from the approved team supply;
- Order diagnostic examinations, medical imaging, and laboratory tests available in the Polyclinic in Beijing Paralympic Village or dedicated hospitals in Hong Kong SAR and Qingdao through the clinics in Hong Kong and Qingdao Villages for members of their own team.

Should a team member require treatment in a hospital, such treatment will be provided under the authority and care of the hospital clinical staff. The attending hospital doctor may consult with the team doctor whenever possible about the treatment.

Specific Regulations Applicable for the Hong Kong SAR

NPC team doctors who wish to practise medicine in the Hong Kong SAR should apply to the Medical Council of Hong Kong (Medical Council), through BOCOG, for limited registration in accordance with the Medical Registration Ordinance (Cap. 161), Laws of Hong Kong. Details of the application procedures can be found at the Medical Council's website at www.mchk.org.hk and the Equestrian Events website at http://www.equestrian2008.org/eng/guideline_e.aspx

All NPCs must inform BOCOG Medical Services by April 30, 2008 of all team doctors intending to provide health care services during the Beijing 2008 Paralympic Games. NPCs must complete the "Beijing Paralympic Games NPC Team Doctors Registration Form", "NPC Employment Declaration", and a notarised copy of their diploma and licence to practise in their own country (in English, French or Chinese). NPC team doctors who practise in China without completing the registration procedure will be in breach of Chinese legislation.

In relation to doctors, failure to notify BOCOG of their presence, and/or to provide a copy of their licence to practise in their own country, will preclude them from being provided with a special Polyclinic prescription

pad. BOCOG has sent the necessary forms to all NPCs in December 2007 for this purpose. The forms may also be downloaded from the BOCOG website:

<http://en.beijing2008.cn/news/official/bulletin/official/n214217084.shtml>

The "Beijing Paralympic Games NPC Team Doctors Registration Form" and "NPC Employment Declaration" must be returned no later than April 30, 2008 to:

Ms. ZHEN Xiaozhen / Ms. LI Yanli

Medical Services Division, Games Services Department
Beijing Organizing Committee for the Games of the XXIX
Olympiad

No. 267, Beisihuanzhonglu

Beijing 102008, China

It is the responsibility of each NPC to select and nominate their team's health care professionals. The NPC health care professionals must be recognised as health care professionals under the laws of the respective team's country.

BOCOG takes no responsibility for any health care provided to NPC team members by NPC team doctors or other NPC healthcare professionals.

5.2 Insurance

BOCOG will not provide any malpractice insurance to cover the health care activities of the NPC team health care professionals. It is suggested that team health care professionals ensure that adequate coverage is provided through their usual insurance agent or broker.

5.3 Pharmacy Services and Prescription Privileges

The Paralympic Village Polyclinic will provide pharmacy services to support the care of athletes and other members of the Paralympic Family. These services will include the supply of medications and access to drug information for foreign medications.

All medications will be dispensed in compliance with the governing laws and regulations of China. Registered NPC team doctors will have prescription privileges during their stay in the Paralympic Village using the Polyclinic specific prescription forms only. These privileges will allow NPC team doctors to prescribe pharmaceuticals available in the Polyclinic Pharmacy as listed in Drug Formulary section of this Guide of the Beijing 2008 Paralympic Games.

All requests for prescriptions, diagnostic test or patient referrals must be written in full in order to assist the polyclinic staff. Acronyms or medical abbreviations must not be used.

6. Health Care Services at the Paralympic Village

6.1 NPC Medical Spaces

In the Beijing Paralympic Village, the NPC Medical Spaces for each NPC will be located in close proximity to the NPCs' accommodation.

The size of NPC medical facilities, which will be assigned to each NPC, depends on the size of the delegation and is in line with the IPC guidelines. All NPC medical facilities will be equipped with items that are in accordance with the IPC Guidelines and will be provided at no cost.

These items include (but are not limited to):

- Folding chairs
- Massage bed (not adjustable)
- Trolley
- Examination lamp
- Sharp disposable container
- Disposable bed sheets
- Towels
- Ice storage container
- Air conditioner
- Disposable paper cups
- Hand washer
- Extension bar
- Recycling bin

6.2 Paralympic Village Polyclinic

The Paralympic Village Polyclinic, which includes the main Doping Control Station in the same building, is approximately 4,400m², and is located within the Residential Zone of the Beijing Paralympic Village. The

Polyclinic offers a comprehensive range of health care services and interpreter service at no charge, and will be operating from August 28 to September 20, 2008. This service will offer immediate care to all the accredited persons with access to the Residential Zone of the Paralympic Village. Prior reservation is recommended in physiotherapy, dental care, optometry and medical imaging to reduce waiting time. Athlete medical stations will support the Polyclinic services at each of the competition and training venues. At the discretion of the athlete, BOCOG will report all episodes of care provided at the Polyclinic to the appropriate NPC medical staff.

Services in Polyclinic will include:

- Emergency services supported by ambulance services
- Hospital Transfer
- Internal Medicine
- General Surgery
- Dermatology
- Sports Medicine including Orthopaedics and Podiatry
- Physiotherapy including Traditional Chinese Medicine (acupuncture and massage only)
- Dentistry (acute cases only)
- Eye services
- Ears, Nose, Throat services (E.N.T.)
- Medical imaging, including X-ray, Ultrasound, Magnetic Resonance Imaging, and interview rooms for radiologists and NPC medical staff to discuss case
- Laboratory services
- Pharmacy

- Gynaecology (on-call)
- Psychology (on-call)
- IPC Medical & Scientific Department office with mail box for TUE notification

All the specialised services will be provided from 8:00 to 23:00. Emergency and hospital transfer will be available 24 hours a day.

6.3 Paralympic Village International Zone

The International Zone, located adjacent to the Residential Zone of the Beijing Paralympic Village, will be serviced by a first aid vehicle and an ambulance crew. The ambulance crew will provide first aid and basic life support to any person requiring assistance in this zone. If further treatment is required the person will be transferred to the Polyclinic, if appropriately accredited, or to the nearest dedicated Paralympic Hospital by the onsite ambulance.

6.4 Medical Arrangements for Venues in Paralympic Co-host Cities

Paralympic Sailing and Equestrian Events will be held in Qingdao and Hong Kong SAR* respectively. The planning for health care services in these venues has mirrored the planning in all other venues. The provision of medical station services, within the athletes' accommodations, has been tailored to reflect the "Village" requirements in Paralympic co-host cities. Services that are not immediately available within these medical stations will be provided at the dedicated Paralympic Hospital.

*** For detailed information regarding the provision of health care services for the 2008 Paralympic Equestrian Events in Hong Kong SAR, please kindly refer to Equestrian Events website at**

http://www.equestrian2008.org/eng/guideline_e.aspx

7. Health Care Services at Paralympic Competition Venues

7.1 Health Care for Athletes and Games Officials

The athlete medical station will provide health care services ranging from sports medicine through to the initial care of life threatening conditions to all persons with Back of House and/or Field of Play access. The Paralympic Village Polyclinic will support this station. The Health Care Services team working in these stations will have a sound knowledge of sports medicine and International Sports Federation medical requirements for the specific sport. This team will comprise doctors, nurses and physiotherapists, and be supported by on site ambulance services for the transfer of acutely ill and/or injured persons.

Athletes may be transferred to the Polyclinic for more comprehensive medical assessment and care. These services will be supported by the Paralympic Hospital Network where necessary.

On site health care services will not be provided in the residences of athletes who choose not to stay in the Paralympic Village.

7.2 Health Care for the Paralympic Family

The Paralympic Family will be treated in the closest medical station accessible to them. Health care services for the Paralympic Family will range from basic first aid to advanced life support. In the event that a member of the Paralympic Family requires hospitalisation, the on site ambulance will transport them to the dedicated

Paralympic Family Hospital, or clinically most appropriate Paralympic Hospital.

7.3 Health Care for Spectators and Others

Spectators and others will be treated in the spectator medical stations in Paralympic venues by the Beijing 2008 Health Care Programme team consisting of doctors, nurses and first aiders. Treatment will range from basic first aid to advanced life support. Where necessary spectators will be stabilised in the station and transported to the most appropriate Paralympic Hospital or the nearest qualified hospital.

8. Health Care Services at Paralympic Training Venues

Health Care Services at Paralympic training venues will operate during the official training schedule. Health care at each training venue will be provided in line with the medical requirements of the particular International Sports Federation, and will be supported by the ambulance service.

The Beijing 2008 Health Care Programme will operate during all official training periods. Athletes training in unofficial training sites or outside official training periods will not be supported by the Health Care Programme.

9. Health Care Services at Paralympic Non-competition Venues

9.1 Opening and Closing Ceremonies

The Beijing 2008 Health Care Programme will provide a Ceremony specific health care response to these events. This service will reflect the needs of the different groups including athletes, members of the Paralympic Family, performers, spectators, sponsors, members of the media and Games Workforce. The response will incorporate all medical stations operating within the different venues and operational compounds, including first aid services in the seating areas as well as first aid teams moving between into and out of the National Stadium. This plan will be supported by on site ambulances.

9.2 Beijing Capital International Airport, Qingdao Liuting International Airport, Hong Kong International Airport

Health Care Services at Beijing Capital International Airport and airports of other Paralympic co-host cities are designed to compliment the existing onsite health care services. The service will provide first line medical care, including resuscitation, and be supported by the on site ambulance service. The facility will operate during peak arrival times and during peak departure days from the Closing Ceremony to the closing of the Paralympic Village.

9.3 Beijing Olympic Green Common Domain

The Olympic Green Common Domain will operate several medical stations. Each station will comprise a doctor, a nurse and a mobile medical response team. These stations will be supported by onsite ambulance service. Any person requiring more definitive care will be transported to the most appropriate Paralympic Hospital. The operational periods of these medical stations will match the operational periods of the Common Domain.

9.4 Main Press Centre

A medical station will operate 24 hours a day staffed by two doctors and a nurse. This service will operate as a general medicine clinic, with advanced resuscitation capabilities. It will be supported by an on site ambulance. Any person requiring more definitive care will be transported to the most appropriate Paralympic Hospital. The operational periods of the medical station will match the operational periods of the Main Press Centre.

9.5 International Broadcasting Centre

A medical station will operate 24 hours a day staffed by two doctors and a nurse. This service will operate as a general medicine clinic, with advanced resuscitation capabilities. It will be supported by an on site ambulance. Any person requiring more definitive care will be transported to the most appropriate Paralympic Hospital. The operational periods of the medical station will match the operational periods of the International Broadcasting Centre.

9.6 Paralympic Family Hotel

A medical station will operate 24 hours a day at Swissôtel Beijing. The station will provide general medicine services, and have advanced life support capabilities. In the event more definitive treatment is required, patients will be transported by ambulance to dedicated Paralympic Hospital, Peking Union Medical College Hospital.

10. Emergency Medical Services and Transportation

The Beijing Emergency Medical Centre will undertake the transfer of ill or injured persons from all official Paralympic sites. In addition, the emergency medical services and transportation will be supported by Qingdao Emergency Medical Centre in Qingdao for the sailing event and by Hong Kong Auxiliary Medical Services, Hong Kong St. John Ambulance Brigade and Hong Kong Fire Services Department in Hong Kong SAR for the equestrian event. Ambulance crews and ambulances will be present at all competition venues, training venues and the majority of non-competition venues.

Besides these ground ambulances, water ambulances will support certain venues where required.

11. Paralympic Family Health Care Programme

11.1 Paralympic Hospital Network

All persons attending the Games will have access to one of the venue medical stations. Those accredited to the Residential Zone of the Paralympic Village can also receive care in the Polyclinic in Beijing or medical stations in Paralympic co-host cities. Anyone requiring hospitalisation will be taken to the most clinically appropriate Paralympic Hospital. The network of Paralympic Hospitals is comprised of General and Specialised units of the Public National Health System.

- The dedicated Paralympic Hospitals for athletes are the China-Japan Friendship Hospital (Beijing), the Qingdao Municipal Hospital (Qingdao) and the Prince of Wales Hospital (Hong Kong SAR).
- The Paralympic Family hospital will be Peking Union Medical College Hospital, Qingdao Municipal Hospital and Queen Elizabeth Hospital respectively.
- The Accredited media hospital will be the Beijing An Zhen Hospital.
- The specialised Rehabilitation hospital will be the Beijing BO AI Hospital.

Dedicated Paralympic Family Hospitals

Beijing (Map of Dedicated Paralympic Hospitals can be found in Appendix II)

Chinese Academy of Medical Sciences, Peking Union Medical College Hospital (Paralympic Family)

China-Japan Friendship Hospital (Athletes)

Beijing An Zhen Hospital, Capital Medical University (CMU) (Accredited Media)

Beijing BO AI Hospital (Rehabilitation Unit)

Paralympic Support Hospitals in Beijing:

Chinese PLA General Hospital

Beijing Hospital, Ministry of Health

Guang'anmen Hospital, China Academy of Chinese Medical Sciences

Peking University First Hospital

Peking University Third Hospital

Peking University Stomatology Hospital

Peking University People's Hospital

Beijing Chao-Yang Hospital, CMU

Beijing Stomatological Hospital, CMU

Beijing Tian Tan Hospital, CMU

Beijing Tong Ren Hospital, CMU

Beijing Friendship Hospital, CMU

Beijing Traditional Chinese Medicine Hospital, CMU

Xuan Wu Hospital, CMU

Beijing Ji Shui Tan Hospital

Peking University Shougang Hospital

Beijing Haidian Hospital

General Hospital of Chinese People's Armed Police Forces (medical rescue team)

Paralympic Support Hospitals in Paralympic Co-host Cities

Qingdao

Qingdao Municipal Hospital (Paralympic Family/Athletes)
The Affiliated Hospital of Medical College Qingdao University

Hong Kong SAR

Prince of Wales Hospital (Athletes)
Queen Elizabeth Hospital (Paralympic Family)

The Beijing 2008 venue medical teams will provide initial first aid and emergency treatment to all ill and/or injured persons within Paralympic venues. In addition, they will manage all hospital transfers where necessary. The Health Care Programme will monitor the progress of all persons transferred to hospital in this way. The hospitalisation of any person who individually refers to a dedicated Paralympic Hospital or any other Chinese hospital may fall outside this monitoring process.

11.2 Medical Expenses Policy for Paralympic Family

BOCOG in conjunction with relevant government agencies is responsible for the provision of free of charge hospital care to certain categories of Paralympic Family members (IPC, B, IPSF, J, NPC, O, Aa, Ab, Ac, Ao, Am, As, OC).

The benefits of this coverage include:

- Free transportation from a Paralympic venue to a dedicated Paralympic Hospital;
- Free treatment in a hospital that is part of the dedicated Paralympic Hospital Network, equivalent to that of a public patient in a public hospital;
- Free emergency and outpatient services in a hospital that is part of the dedicated Paralympic Hospital Network, equivalent to that of a public patient in a public hospital;
- Free medication during the hospital stay, equivalent to that of a public patient in a public hospital.

This coverage is for acute illnesses and injuries and emergencies occurring during their stay in Beijing and the co-host cities for the Paralympic Games.

The period of coverage for the accredited members of the Paralympic Family will start with the opening of the Paralympic Village on August 30, 2008 and ends with the closing of the Paralympic Village on September 20, 2008, with special consideration given to IPC Staff, Games Officials and Chefs de Mission and their assistants who may arrive on/after August 28 to set up team accommodations within the Paralympic Village. Outside of this period, it is advisable that all members of the Paralympic Family carry private health insurance to cover potential health care expenditures, including ambulance transport and hospitalisation.

Furthermore, private health care provision and private consultations, outside the aforementioned arrangements are at the risk and the expense of the individuals, or the NPCs.

11.3 Repatriation

BOCOG will provide free of charge repatriation for the dedicated members (IPC, B, IPSF, J, NPC, O, Aa, Ab, Ac, Ao, Am, As, OC) of the Paralympic Family. In the event that a member of the Paralympic Family requires medical repatriation, free transport with necessary accompanying medical personnel will be provided. In the event of death, the repatriation process will cover the cost of transporting the body to the home country. All arrangements in this respect will be handled by BOCOG.

12. Public Health and Hygiene Issues

A comprehensive and integrated public health programme will be operational for the duration of the Paralympic Games at all venues. The Ministry of Health, Beijing Municipal Health Bureau and other public health officials will be accredited to enter venues to perform public health inspections. The services will include:

- Monitoring all in-venues food handling and hygiene through access to food preparation, storage and delivery facilities and collection of food samples for scientific analysis to ensure food hygiene;
- Monitoring the environment at all venues through appropriate handling of venue sanitation issues (air duct system, water coolers, drinking water, water quality of swimming pool, indoor air quality) and waste issues (clinical waste, storage and disposal of waste);
- The development of a range of good health messages;
- Readiness to perform epidemiological surveillance to follow up on any issues of public health concern.

13. Non Smoking Policy

BOCOG is committed to achieving a smoke-free environment for the Games. A Non-Smoking Policy will be implemented. This policy directly applies to all Paralympic competition, training and non-competition venues. There will be designated smoking areas that will meet fire safety requirements in all venues.

This policy reflects both Chinese legislative requirements and sport expectations regarding the hosting of a healthy sporting event. In addition, the IPC supports this policy.

14. Autonomic Dysreflexia and Boosting

The IPC Medical & Scientific Department may appoint medical staff to make assessment of autonomic dysreflexia and boosting, which can be undertaken at anytime including in the call up room or such other areas used by the participants for warm-up purposes prior to competition and at any other time deemed appropriate, as reflected by the provisions of the IPC Anti-Doping Code (section 19).

If an athlete who has a spinal cord lesion at T6 and above cervical or high thoracic spinal injury is hypertensive, medical evidence on the level of his/her blood pressure and what particular treatment the athlete taking is required prior to competition. Athletes in this category may be subject to medical assessment and verification prior to and during competition.

15. Orthotic, Prosthetic and Wheelchair Repair Services

15.1 Repair Services at Beijing Paralympic Village

An Orthotic, Prosthetic and Wheelchair Repair Centre will be set up in the Beijing Paralympic Village. This centre will provide services through a fully equipped maintenance workshop. It will operate from August 30 to September 19, 2008. Opening hours will be from 7:00 to 23:00.

15.2 Repair Services at Paralympic Competition Venues

15.2.1 Repair Stations

Repair stations will operate at specific locations in dedicated competition venues and will be fully equipped with sufficient technical personnel. Personnel will provide basic repairs and spare parts when necessary to facilitate athletes' readiness for competition. Repairs are provided free of charge to athletes, team officials, Games officials and members of the Paralympic Family. Opening hours will reflect the operational hours of the respective venue.

Repair services in the competition venues are described below:

Wheelchair repair service (only) will be provided at:

- Olympic Green Tennis Court (Wheelchair Tennis)
- National Indoor Stadium/Beijing Science and Technology University Gymnasium (Wheelchair Basketball)
- Beijing Science and Technology University Gymnasium (Wheelchair Rugby)
- Fencing Hall (Boccia)
- Fencing Hall (Wheelchair Fencing)

Orthotic, prosthetic and wheelchair repair services will be provided at:

- National Stadium (Athletics)
- Peking University Gymnasium (Table Tennis)
- Laoshan Velodrome (Cycling - Track)
- Ming Tombs Reservoir Road (Cycling - Road)
- Olympic Green Archery Field (Archery)
- China Agricultural University Gymnasium (Volleyball Sitting)

15.2.2 Mobile Repair Service

Mobile service units will provide limited services in orthotic, prosthetic and wheelchair repair in specific venues where there is no repair station.

Beijing 2008

